

# Robertson Serbian Language Presentation



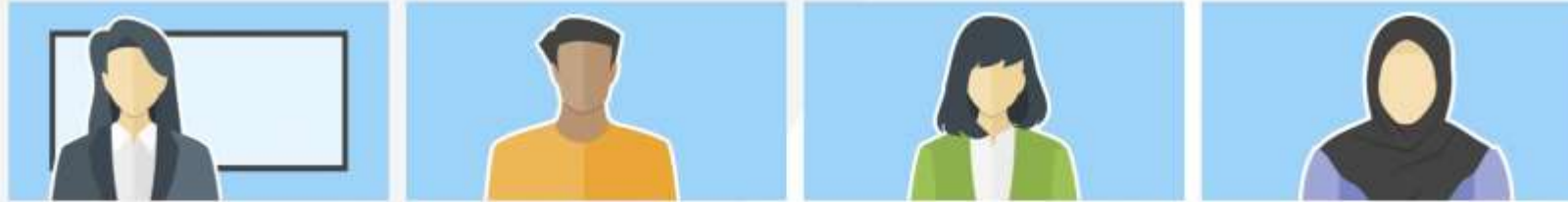
An aerial photograph of Belgrade, Serbia, taken at sunset. The sky is filled with warm, golden light, and the sun is low on the horizon. In the foreground, the Katedrala Svetosavica, a large white church with a prominent green dome, is visible. The city's buildings and streets are illuminated by the setting sun, creating a dramatic and scenic view.

# The beginning

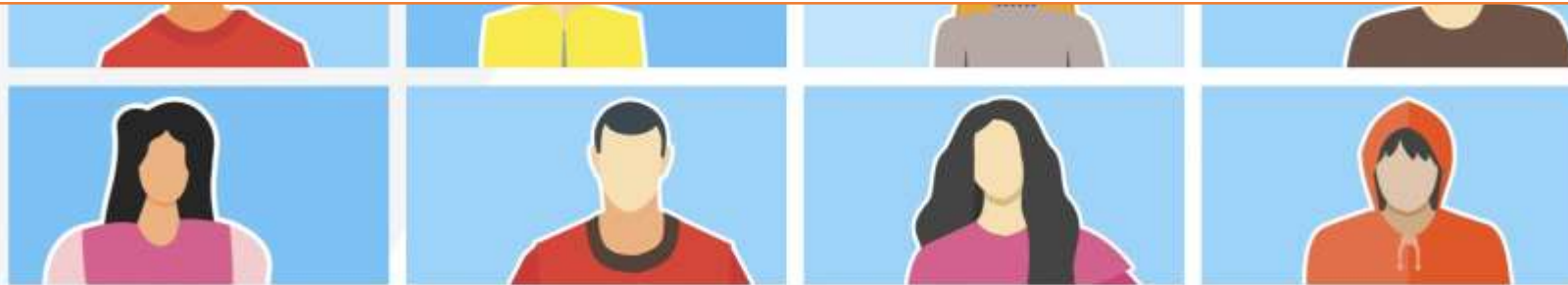
---

Robertson Language School was opened in 1991 as one of the first private language schools in Serbia. English was its first language and it stayed so for the first twenty years. The next one to be added was German, due to the fact that a growing number of people need this language. The third language we started providing was Serbian for foreigners, both those working and those studying in Serbia.

# Online Adult Serbian Courses



Not surprisingly, most adult learners opt for on-line Serbian language courses. Our courses comprise mainly everyday dialogues and situations which help foreigners become familiar with local life and culture. We fully understand that adult learners need to see their classes with us as a safe haven where they feel comfortable making mistakes with teachers who do not impose unrealistic goals and set overly ambitious challenges for them. On the contrary, our courses aim at making their life in Serbia easier, more pleasant and fulfilling.



# Language and culture

Our motto is language is a means to the end, students are those who decide which end or goal they want to achieve. We strongly believe that language is also a doorway into another culture. This is especially applicable to our Serbian Language students who encounter a new culture upon their arrival in the country and should be able to find their bearings in it. To that end, Robertson students don't have a single designated teacher. Instead, all our teachers work with all of our groups at different times. This provides an opportunity for the students to learn different accents and discover varied perspectives on a subject in a welcoming environment.



# CONCLUSION

A top-down view of several children's hands arranged in a circle on a grassy field. Each hand is holding a small amount of dark brown soil with a tiny green seedling growing from it. The children are wearing various colored clothing, including a green shirt and a pink shirt. The background is a lush green lawn.

The key component of our thirty-three-year-long success is the attention we provide our students – individually and as a group. In order for a lesson to resonate, it needs to be relevant to the student. This is how we ensure that our classes stay informative, fun, and engaging for everyone.